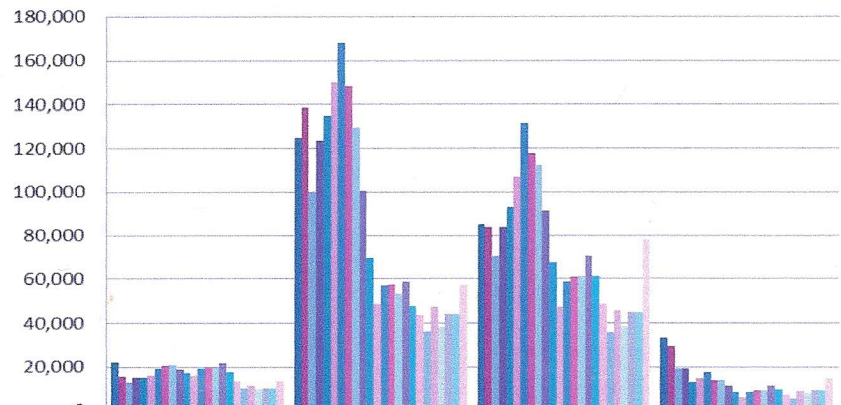




**Oklahoma's Average Annual Total P Loading in Kilograms per Year (excluding targeted high flows)**



	Flint Creek near Kansas	Illinois River near Watts	Illinois River near Tahlequah	Barren Fork near Eldon
Total P 80-93	22,279	124,832	85,235	33,001
Total P 93-97	15,727	138,508	83,799	29,482
Total P 94-98	12,986	99,898	70,546	19,163
Total P 95-99	14,974	123,581	83,632	19,257
Total P 96-00	15,100	134,986	92,876	13,163
Total P 97-01	15,989	149,927	106,797	14,548
Total P 98-02	19,224	167,987	131,491	17,603
Total P 99-03	20,579	148,151	117,524	14,059
Total P 00-04	20,963	129,533	112,341	13,685
Total P 01-05	19,098	100,347	91,325	11,465
Total P 02-06	17,415	69,482	67,345	8,500
Total P 03-07	15,977	48,448	47,216	5,716
Total P 04-08	19,356	56,951	58,605	8,574
Total P 05-09	19,586	57,272	60,830	9,197
Total P 06-10	19,818	53,127	61,131	9,335
Total P 07-11	21,700	58,493	70,259	11,159
Total P 08-12	17,473	47,682	61,180	9,837
Total P 09-13	13,543	43,412	48,513	7,054
Total P 10-14	10,154	35,998	35,578	5,357
Total P 11-15	11,382	47,254	45,505	8,711
Total P 12-16	9,516	38,292	38,711	7,831
Total P 13-17	10,063	44,029	45,051	9,461
Total P 14-18	10,069	44,029	45,051	9,461
Total P 15-19	13,505	57,100	77,737	14,623

Values represent all available data, which is routinely collected and excludes targeted high flow events.

# Illinois River near Watts

Illinois River near Watts			Loadings
Year	Flow (cfs)	Total P (mg/L)	Total P (kg/year)
1980	173	0.423	65,279
1981	260	0.190	44,119
1982	591		
1983	352		
1984	706		
1985	947		
1986	879		
1987	815		
1988	531		
1989	558	0.210	104,653
1990	1,127	0.181	182,432
1991	724	0.162	104,534
1992	760	0.161	109,571
1993	1,163	0.277	287,317
1994	674	0.168	101,127
1995	783	0.143	100,233
1996	693	0.188	116,542
1997	573	0.163	83,415
1998	713	0.138	87,876
1999	793	0.250	177,057
2000	648	0.309	178,827
2001	649	0.346	200,549
2002	619	0.316	174,694
2003	347	0.155	48,035
2004	688	0.104	63,903
2005	459	0.106	43,453
2006	349	0.116	36,156
2007	464	0.106	43,926
2008	1177	0.068	71,480
2009	915	0.069	56,386
2010	587	0.057	29,882
2011	1101	0.081	79,648
2012	336	0.082	15,594
2013	642	0.082	46,994
2014	448	0.056	22,412
2015	1364	0.061	74,303
2016	434	0.065	25,189
2017	918	0.064	52,481
2018	715	0.066	42,126
2019	1511	0.071	95,806
Average	705	0.152	95,427

Year	80-93	90-94	91-95	92-96	93-97	94-98	95-99	96-00	97-01	98-02	99-03	00-04	01-05	02-06	03-07	04-08	05-09	06-10	07-11	08-12	09-13	10-14	11-15	12-16	13-17	14-18	15-19
Pt (mg/l)	0.204	0.198	0.201	0.210	0.200	0.162	0.195	0.221	0.249	0.275	0.271	0.246	0.203	0.158	0.118	0.102	0.095	0.085	0.077	0.065	0.068	0.066	0.068	0.062	0.065	0.061	0.065
Flow (cfs)	685	890	821	815	777	687	711	684	675	684	611	590	552	492	461	627	673	698	849	823	716	746	778	690	761	776	988
Pt (kg/yr)	124,832	157,569	147,520	153,006	138,508	134,986	149,927	167,987	148,151	129,533	100,347	69,482	48,448	56,951	57,272	53,127	58,493	47,682	43,412	36,806	47,254	38,287	44,029	42,044	57,100		
Decrease	0.0%	-26.2%	-18.2%	-22.6%	-11.0%	20.5%	1.0%	-8.1%	-20.1%	-34.6%	-18.7%	-3.8%	19.6%	44.3%	61.2%	54.4%	54.1%	57.4%	53.1%	61.8%	65.2%	70.5%	62.1%	69.3%	64.7%	66.3%	54.3%

Illinois River near Watts (excluding targeted high flows)

