



# Arkansas Natural Resources Commission

## FINAL REPORT ON COUNTY REGISTRATION

County	# of Acres	Tons Generated	Tons Removed From Houses	Applied	Stored	Transferred or Sold	Other	Litter Use Difference	No. of Houses	Bird Capacity	Farms Reported (2019)	2018 reg	Diff form 18 to 19	% short or long	% Complete
ASHLEY	391	3,450	3,450	800	100	2,550	0	0	18	191,000	5	5	0	0.0%	100.0%
BAXTER	7,410	3,050	3,010	1,745	0	1,265	0	40	14	234,000	5	5	0	0.0%	100.0%
BENTON	15,422	591,613	573,990	7,829	24,113	549,386	699	8,036	1,070	25,311,767	237	248	-11	-4.4%	95.6%
BOONE	22,656	53,213	48,931	8,839	2,389	37,702	0	0	354	5,840,400	89	90	-1	-1.1%	98.9%
BUFFALO (SEARCY)	928	1,560	1,090	322	470	775	0	477	6	453,000	2	1	1	100.0%	200.0%
CALHOUN	850	1,139	1,139	350	150	639	0	0	8	90,000	3	3	0	0.0%	100.0%
CARROLL	56,320	127,749	106,989	30,957	4,692	71,391	149	199	776	13,997,579	181	184	-3	-1.6%	98.4%
CLARK	883	5,103	3,110	2,036	586	488	0	0	20	276,700	7	6	1	16.7%	116.7%
CLAY	4,696	31,443	21,888	4,700	3,836	13,352	0	0	144	14,667,500	18	15	3	20.0%	120.0%
CLEBURNE	10,808	22,320	19,642	4,393	3,398	11,851	0	0	131	2,482,340	38	39	-1	-2.6%	97.4%
CLEVELAND	4,559	45,956	43,755	3,047	7,222	26,656	9,031	2,201	289	5,558,450	73	73	0	0.0%	100.0%
COLUMBIA	3,264	12,857	8,867	3,105	1,385	4,377	0	0	71	1,381,800	18	17	1	5.9%	105.9%
CONWAY	15,243	37,443	28,640	14,064	2,355	12,222	0	0	246	5,651,175	73	80	-7	-8.8%	91.3%
COSSATOT (SEVIER)	28,182	49,335	47,747	25,412	662	21,803	100	230	476	9,425,200	113	108	5	4.6%	104.6%
CRAIGHEAD	20	800	800	0	0	800	0	0	4	57,537	1	0	1	#DIV/0!	#DIV/0!
CRAWFORD	3,383	6,155	7,044	2,724	571	2,688	0	1,061	42	802,400	16	17	-1	-5.9%	94.1%
DESHA	0	1,470	0	0	0	0	1,470	1,470	8	196,000	1	1	0	0.0%	100.0%
DREW	2,812	5,648	5,648	180	740	4,728	0	0	42	702,900	13	14	-1	-7.1%	92.9%
FRANKLIN	25,964	74,617	71,895	36,052	3,003	32,841	0	0	340	6,823,383	88	84	4	4.8%	104.8%
FULTON	3,843	3,580	3,580	465	95	3,020	0	0	38	558,250	12	12	0	0.0%	100.0%
GARLAND	2,932	4,081	4,081	983	1,047	2,051	0	0	31	357,700	11	12	-1	-8.3%	91.7%
GRANT	270	1,100	1,100	0	0	1,100	0	0	7	217,000	1	1	0	0.0%	100.0%
HEMPSTEAD	34,346	90,434	63,323	34,957	740	27,626	0	0	535	9,829,700	146	145	1	0.7%	100.7%
HOT SPRING	6,211	37,845	37,845	6,390	250	31,206	0	0	56	921,300	18	13	5	38.5%	138.5%
INDEPENDENCE	21,266	46,791	45,751	4,137	500	41,114	0	0	311	6,886,825	59	57	2	3.5%	103.5%
IZARD	10,130	17,328	13,400	7,243	1,269	6,418	0	1,530	113	2,491,250	24	27	-3	-11.1%	88.9%
JACKSON	80	900	900	0	0	900	0	0	8	702,200	2	2	0	0.0%	100.0%
JEFFERSON	640	5,660	5,660	41	0	5,619	0	0	35	1,670,100	6	6	0	0.0%	100.0%
JOHNSON	19,407	96,467	78,266	15,812	7,130	52,908	2,416	0	343	6,059,113	85	81	4	4.9%	104.9%
LAFAYETTE	16,550	19,863	18,755	10,485	577	6,557	2,044	908	137	2,322,900	41	44	-3	-6.8%	93.2%
L'AGLE CREEK (Bradley)	0	8,130	4,669	916	10	3,700	0	-43	57	1,731,000	17	13	5	38.5%	130.8%
LAWRENCE	3,880	19,991	19,991	2,159	1,900	13,000	2,932	0	108	2,118,871	20	21	-1	-4.8%	95.2%
LINCOLN	27,802	33,785	33,785	2,008	4,256	27,521	0	0	199	4,313,576	48	48	0	0.0%	100.0%
LITTLE RIVER	12,859	21,617	21,557	13,563	5,923	2,131	0	60	147	2,868,400	40	41	-1	-2.4%	97.6%
LOGAN	23,992	95,324	76,405	23,627	3,348	49,430	0	0	517	11,059,336	138	133	5	3.8%	103.8%
MADISON	35,565	78,188	78,188	21,707	0	56,481	0	0	565	11,881,790	153	151	2	1.3%	101.3%
MARION (CROOKED CREEK)	9,489	13,032	13,032	2,268	200	10,564	0	0	88	1,011,600	19	18	1	5.6%	106.6%
MILLER	1,242	3,250	2,914	1,172	0	1,742	0	0	26	437,100	9	8	1	12.5%	
MINE CREEK (HOWARD)	33,541	98,465	73,306	27,869	3,016	42,057	24,692	24,328	601	10,407,960	193	199	-6	-3.0%	97.0%
MONTGOMERY	5,003	10,158	6,854	3,910	78	2,866	0	0	71	1,010,070	31	33	-2	-6.1%	93.9%
NEVADA	10,481	23,717	22,995	11,419	905	10,672	0	0	152	2,586,401	47	49	-2	-4.1%	95.9%
NEWTON	4,640	4,045	4,045	2,895	0	1,150	0	0	24	234,000	7	7	0	0.0%	100.0%
OUACHITA	1,360	4,139	4,872	1,891	3,047	0	0	66	22	481,200	4	1	3	300.0%	400.0%
PERRY	3,858	12,690	10,857	6,719	1,591	2,547	0	0	66	1,381,650	18	19	-1	-5.3%	94.7%
PIKE	13,713	37,257	31,542	13,419	3,013	16,575	1,768	3,233	242	3,691,420	86	86	0	0.0%	100.0%
POLK ( RICH MT.)	19,016	64,939	64,939	23,913	1,936	37,693	1,397	0	346	8,720,100	97	100	-3	-3.0%	97.0%
POPE	15,130	41,406	31,892	12,270	1,087	18,410	0	126	261	5,899,010	67	54	13	24.1%	124.1%
POTEAU RIVER (SCOTT)	9,900	70,798	49,159	3,922	80	43,472	5	1,680	360	12,590,700	89	93	-4	-4.3%	95.7%
PULASKI	835	3,518	3,518	0	25	3,493	0	0	20	413,000	3	3	0	0.0%	100.0%
RANDOLPH	20,557	81,184	75,133	13,245	3,250	58,537	103	0	379	9,175,062	73	68	5	7.4%	107.4%
SEBASTIAN	6,523	30,030	26,821	3,785	1,384	21,652	0	0	215	5,590,600	55	58	3	5.2%	94.6%
SHARP	16,887	60,014	58,452	14,061	3,220	41,171	0	0	342	7,964,830	80	80	0	0.0%	100.0%
STONE	18,802	27,118	27,118	13,518	4,060	9,541	0	0	150	3,656,700	41	42	-1	-2.4%	97.6%
UNION	1,328	4,170	4,170	1,771	1,451	948	0	0	63	700,625	13	13	0	0.0%	100.0%
VAN BUREN	495	1,624	1,424	560	0	864	0	0	13	312,000	3	3	0	0.0%	100.0%
WASHINGTON	18,585	121,213	94,082	15,286	17,779	72,422	0	11,405	765	16,801,203	161	207	-46	-22.2%	77.8%
WHITE	16,070	48,503	56,173	4,972	1,799	49,402	0	0	205	6,433,600	31	31	0	0.0%	100.0%
YELL	32,887	106,997	104,410	27,724	5,413	42,026	31,642	2,395	558	11,861,621	144	142	2	1.4%	101.4%
<b>57</b>	<b>TOTAL</b>	<b>TOTAL</b>	<b>TOTAL</b>	<b>TOTAL</b>	<b>TOTAL</b>	<b>TOTAL</b>	<b>TOTAL</b>	<b>TOTAL</b>	<b>TOTAL</b>	<b>TOTAL</b>	<b>TOTAL</b>	<b>TOTAL</b>	<b>TOTAL</b>	<b>-31</b>	
	683,906	2,524,272	2,272,599	497,637	136,051	1,614,100	78,448	59,402	12,235	271,492,894	3,073	3,111			

TONS/ACRE 0.73

County
ASHELY
BAXTER
<b>BENTON</b>
BOONE
BUFFALO (SEARCY)
CALHOUN
<b>CARROLL</b>
<b>CLARK</b>
CLEBURNE
CLEVELAND
<b>COLUMBIA</b>
CONWAY
COSSATOT (SEVIER)
CRAIGHEAD
<b>CRAWFORD</b>
DESHA
DREW
<b>FRANKLIN</b>
FULTON
GARLAND
GRANT
HEMPSTEAD
HOT SPRING
<b>INDEPENDENCE</b>
<b>IZARD</b>
JACKSON
<b>JEFFERSON</b>
JOHNSON
<b>LAFAYETTE</b>
<b>L'AGLE CREEK (Bradley)</b>
LAWRENCE
<b>LINCOLN</b>
<b>LITTLE RIVER</b>
LOGAN
MADISON
<b>MARION (CROOKED CREEK)</b>
MILLER
<b>MINE CREEK (HOWARD)</b>
MONTGOMERY
NEVADA
<b>NEWTON</b>
OUACHITA
<b>PERRY</b>
PIKE
<b>POLK (RICH MT.)</b>
<b>POPE</b>
<b>POTEAU RIVER (SCOTT)</b>
PULASKI
RANDOLPH
<b>SEBASTIAN</b>
SHARP
STONE
UNION
VAN BUREN
<b>WASHINGTON</b>
WHITE
<b>YELL</b>



# Arkansas Natrual Resources Commission



County	# OF ACRES	TONS GENERATED	TONS USED:				No. of Houses	Total Amt of Birds	NUMBER OF FARMS REPORTED	County
			APPLIED	STORED	TRANSFERRED	OTHER				
BAXTER	7410	3,050	1,745	0	1,265	0	14	234,000	5	BAXTER
BENTON	15422	591,613	7,829	24,113	549,386	699	1,070	25,311,767	237	BENTON
BOONE	22656	53,213	8,839	2,389	37,702	0	354	5,840,400	89	BOONE
CARROLL	56,320	127,749	30,957	4,692	71,391	149	776	13,997,579	181	CARROLL
CRAWFORD	3,383	6,155	2,724	571	2,688	0	42	802400	16	CRAWFORD
FRANKLIN	25,964	74,617	36,052	3,003	32,841	0	340	6823383	88	FRANKLIN
MADISON	35565	78,188	21,707	0	56,481	0	565	11881790	153	MADISON
MARION (CROOKED CREEK)	9,489	13,032	2,268	200	10,564	0	88	1011600	19	MARION (CROOKED CREEK)
NEWTON	4,640	4,045	2,895	0	1,150	0	24	234000	7	NEWTON
POLK ( RICH MT.)	835	64,939	23,913	1,936	37,693	1,397	346	8720100	3	POLK ( RICH MT.)
POTEAU RIVER (SCOTT)	9,900	70,798	3,922	80	43,472	5	360	12590700	89	POTEAU RIVER (SCOTT)
SEBASTIAN	6523	30,030	3,785	1,384	21,652	0	215	5590600	55	SEBASTIAN
WASHINGTON	18585	121,213	15,286	17,779	72,422	0	765	16801203	161	WASHINGTON
<b>TOTAL</b>	<b>216,692</b>	<b>1,238,642</b>	<b>161,922</b>	<b>56,147</b>	<b>938,707</b>	<b>2,250</b>	<b>4,959</b>	<b>109,839,522</b>	<b>1103</b>	
<b>TONS/ACRE</b>	<b>0.747244938</b>	<b>TOTAL TONS OF LITTER USED:</b>								



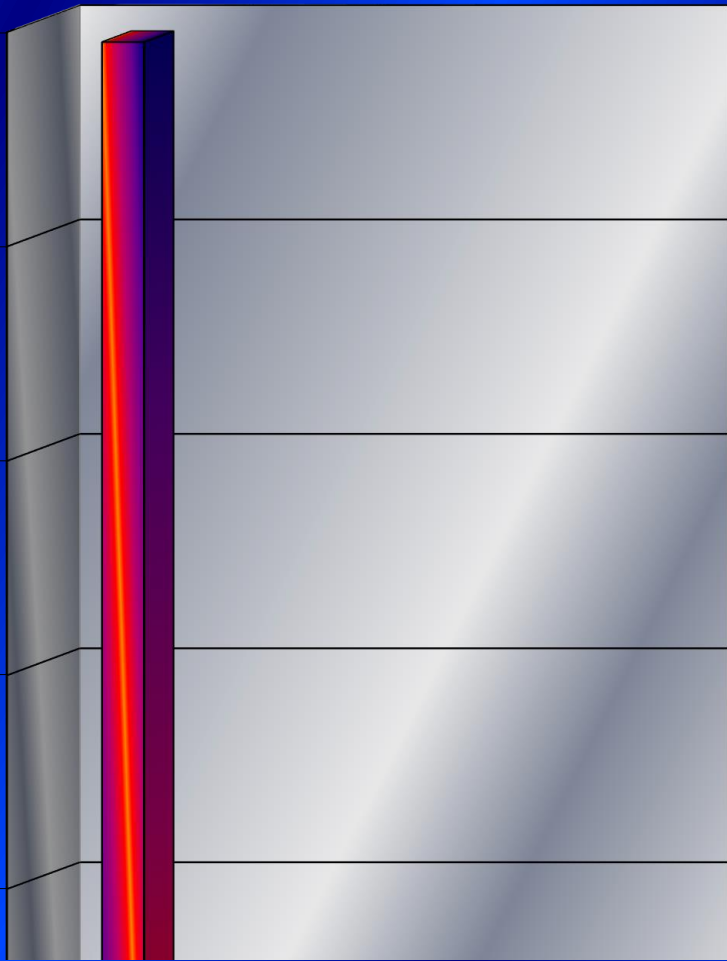
600,000

500,000

400,000

300,000

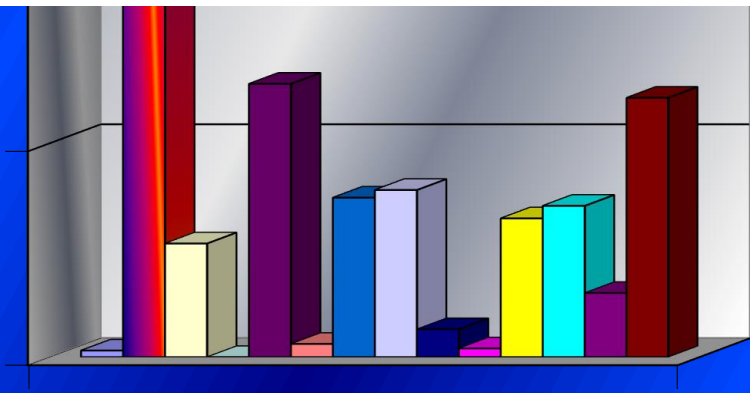
200,000



100,000

0

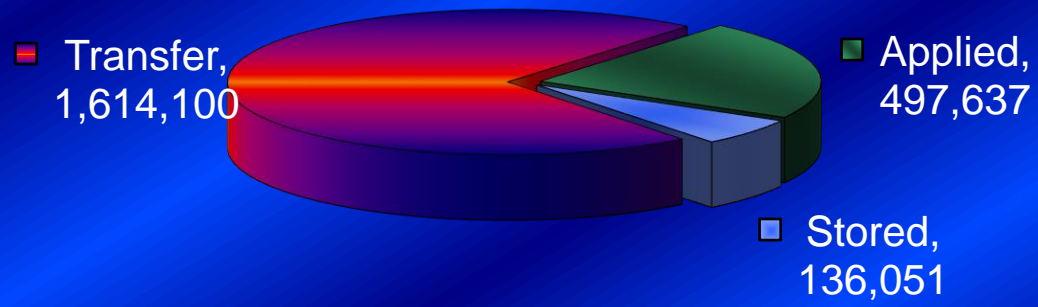
1



■ BAXTER	■ BENTON	■ BOONE	■ #REF!	■ CARROLL
■ CRAWFORD	■ FRANKLIN	■ MADISON	■ MARION (CROOKED CREEK)	■ NEWTON
■ POLK ( RICH MT.)	■ POTEAU RIVER (SCOTT)	■ SEBASTIAN	■ WASHINGTON	



# Litter Use

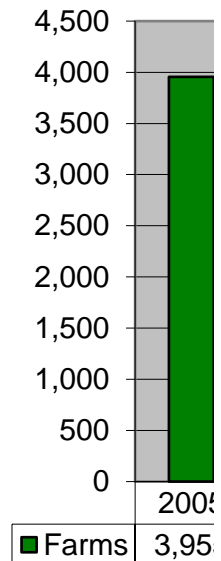
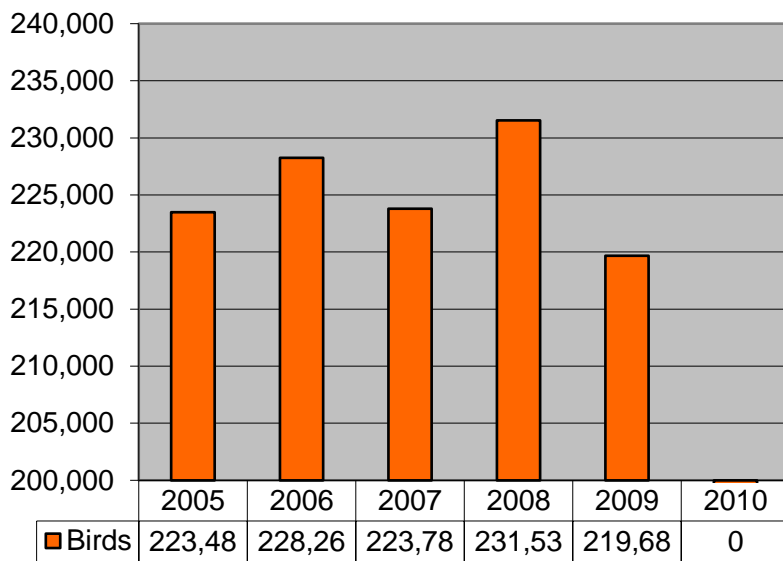


■ Applied   ■ Stored   ■ Transfer

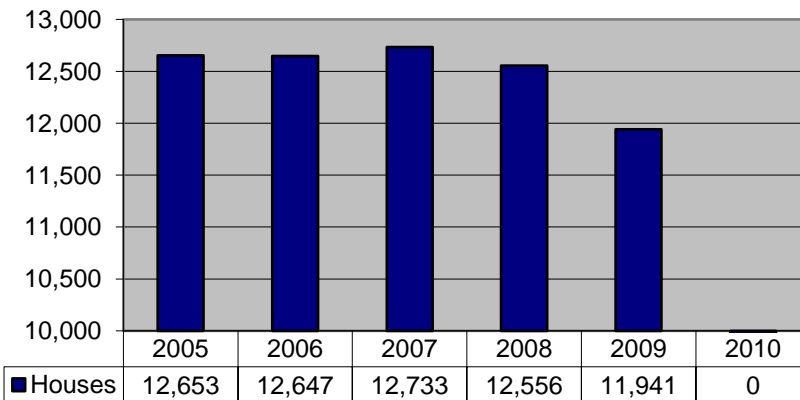


Reg. Year	Birds	Farms	Houses	Broilers	Hens	Pullets	Turkeys
2005	223,483	3,955	12,653				
2006	228,262	3,801	12,647				
2007	223,785	3,768	12,733				
2008	231,533	3,678	12,556				
2009	219,681	3,514	11,941				
2010	0	0	0				

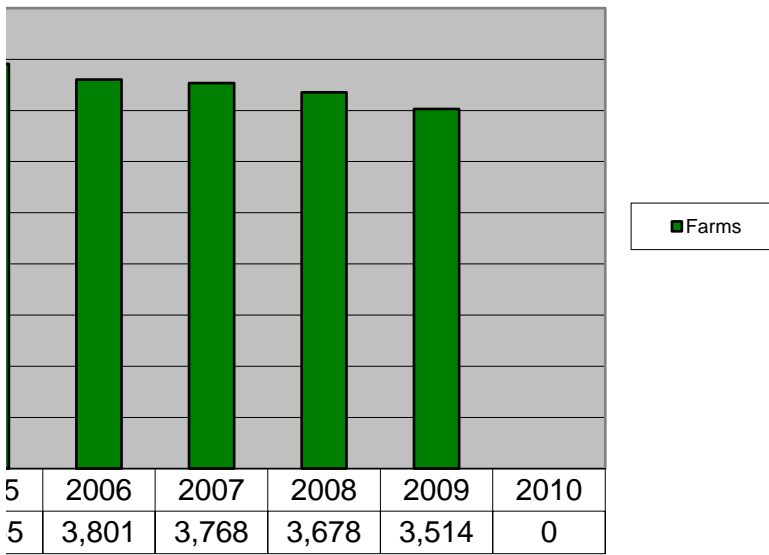
Birds



Houses



### Farms



5	2006	2007	2008	2009	2010
5	3,801	3,768	3,678	3,514	0